

HON

Preferred
Fabrics

Popular
Choices

You
Can

Rely
On

Time-sensitive projects

Appealing fabric options ready to go

Hassle-free selection

No more guesswork

Well-rounded collection

Go-to solution

Easy, Convenient, Dependable

Furniture projects can be full of surprises, so it's comforting when there's a part of the process you can count on. That's why you'll love HON's Preferred Fabrics—a concise offering of popular panel and seating fabrics preselected from our standard offering. You can rely on these fabrics to be smart choices that are readily available for time-sensitive projects.

You can recommend Preferred Fabrics with confidence because the program's patterns and colors align with current design trends and have broad application possibilities. A range of grades and price points is available.

To order Preferred Fabrics, look for the star icon (★) in pricer fabric pages.

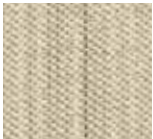
PANEL FABRIC

The photographic reproduction of fabrics and finishes is a high-speed printing process. Actual samples should be obtained before making fabric and finish selections.

TI Twilight Grade IV



03 Haze



01 Crème



05 Harvest



06 Ethereal



04 Mushroom

LC Lucy Grade III



24 Neutra



20 Mist



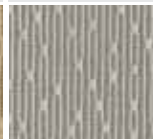
22 Dusk



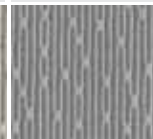
28 Snowdrop



30 Cornsilk



32 Aspen

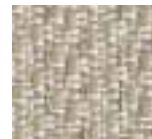


35 Pewter

RF Refuge Grade III



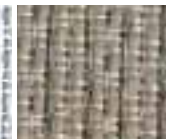
94 Tidal



92 Dune



93 Frost



96 Artesian



98 Mineral

PANEL FABRIC

The photographic reproduction of fabrics and finishes is a high-speed printing process. Actual samples should be obtained before making fabric and finish selections.

TP Tempest Grade III



70 Tumbleweed



10 Goldrush

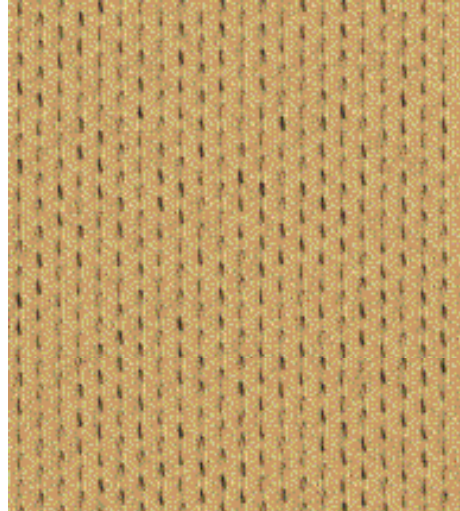
40 Wind Chill

80 Full Stream



30 Dragonfly

SRT Sarto Grade III



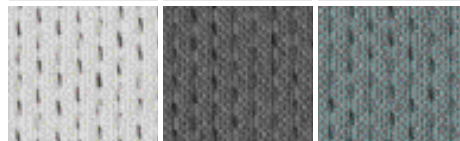
13 Wheat



18 Oyster

25 Meadow

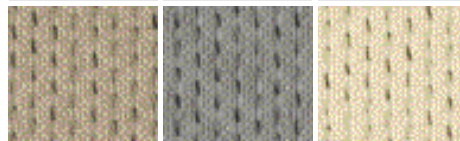
33 Desert



45 Mist

52 Shale

64 Reef



76 Mushroom

88 Ash

93 Sesame

GN Element Grade II



55 Warm Beige



53 Parchment

13 Veil

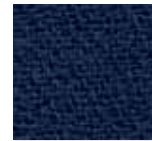
73 Latte



72 Millet

75 Wisp

65 Flint



67 Indigo

PANEL FABRIC

The photographic reproduction of fabrics and finishes is a high-speed printing process. Actual samples should be obtained before making fabric and finish selections.

PN Appoint Grade IV



09 Morel



10 Turmeric

11 Artichoke

12 Chai



13 Walnut

15 Dune

16 Nimbus



18 Copper

14 Hummus

17 Darkpewter

TA Tango Grade III



30 Tequila



33 Playa

39 Pecan

RE Reflections Grade III



21 Loggia



22 Pewter

23 Moonstone

24 Stainless



25 Vanilla

26 Bamboo

27 Winter



28 Mistral

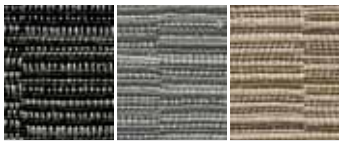
SEATING FABRIC

The photographic reproduction of fabrics and finishes is a high-speed printing process. Actual samples should be obtained before making fabric and finish selections.

AI Attire Grade III



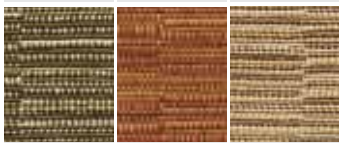
82 Ivy



10 Onyx

19 Lithium

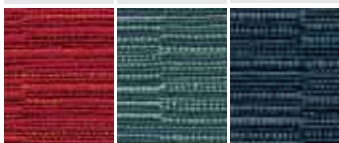
26 Taupe



76 Fatigue

42 Blaze

49 Sable



62 Crimson

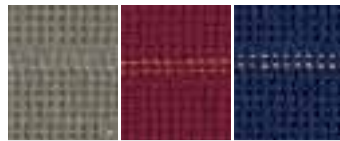
96 Turquoise

90 Blue Lagoon

PE Esplanade Grade IV



10 Licorice

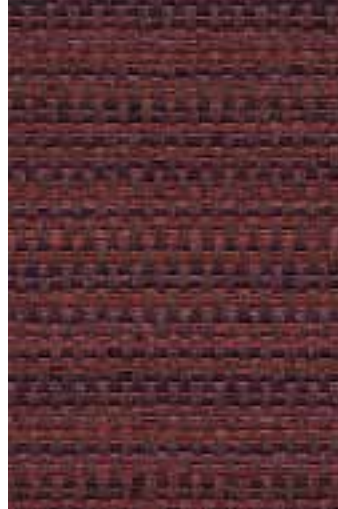


22 Alloy

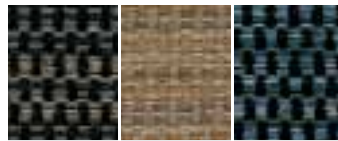
62 Berry

90 Lapis

RI Stitchery Grade III



65 Jam



10 Jet

24 Barley

90 Indigo

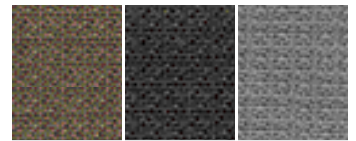


49 Ganache

PNS Appoint Grade IV



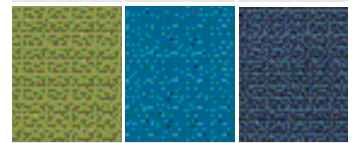
001 Morel



002 Bronze

003 Espresso

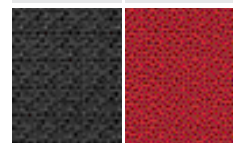
004 Platinum



005 Lawn

006 Turquoise

007 Jet



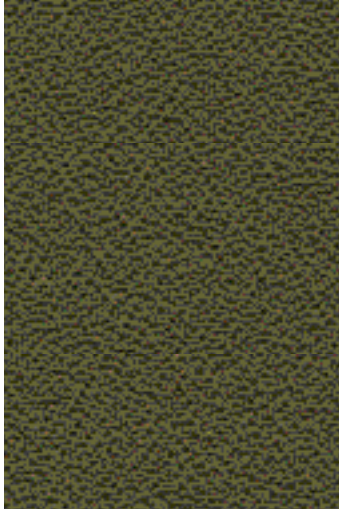
008 Carbon

010 Cherry

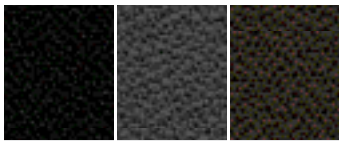
SEATING FABRIC

The photographic reproduction of fabrics and finishes is a high-speed printing process. Actual samples should be obtained before making fabric and finish selections.

CU Centurion Grade III



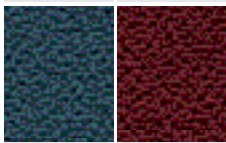
82 Olivine



10 Black

19 Iron Ore

49 Espresso



90 Cerulean

62 Berry

SX Silvertex™ Vinyl Grade V



05 Jet



12 Sunkist

18 Sage

19 Celery



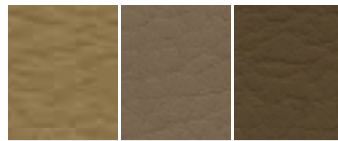
23 Carbon

24 Meteor

WP Whisper Vinyl Grade IV



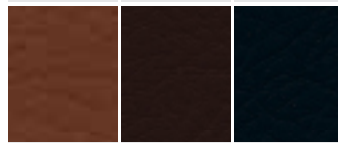
62 Cognac



18 Camel

20 Antelope

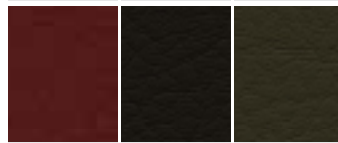
21 Cappuccino



25 Cinnamon

28 Sangre

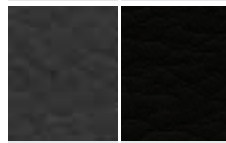
37 Navy



42 Salsa

49 Espresso

82 Forest



39 Charcoal

40 Black



The HON Company
200 Oak Street
Muscatine, IA 52761
800.833.3964
hon.com

© 2012 The HON Company. (4/12)
HON is a registered trademark of HNI Technologies, under license to The HON Company. Silvertex is a trademark of Spradling Holdings Inc. Models, upholstery, and finishes are subject to change without notice.