

Chair Upholstery/Finishes

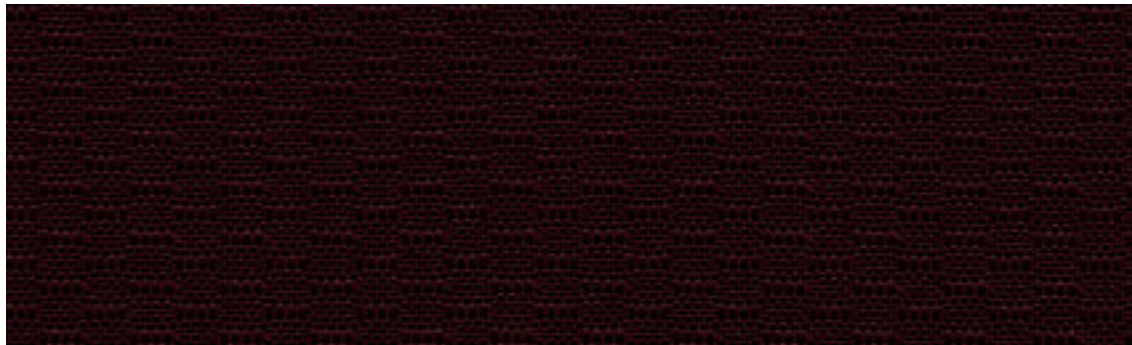
SELECTIONS WITH STYLE! The HON Company gives you chair upholstery that's as visually appealing as it is durable. Choose colors and patterns that fit your office ambiance.

Note: The photographic reproduction of fabrics and finishes is a high speed printing process. Actual samples should be obtained before making fabric and finish selections.

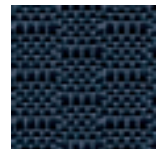
BK Classic

PRICE CODE II

100% Polyester



19 Iron



85 Blue

62 Burgundy

AB Confetti

PRICE CODE III

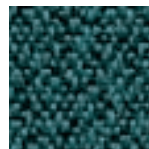
100% Olefin



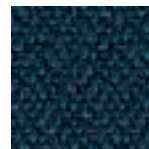
32 Brown



82 Blue



72 Teal



90 Blue



12 Gray



18 Gray



62 Burgundy



98 Green

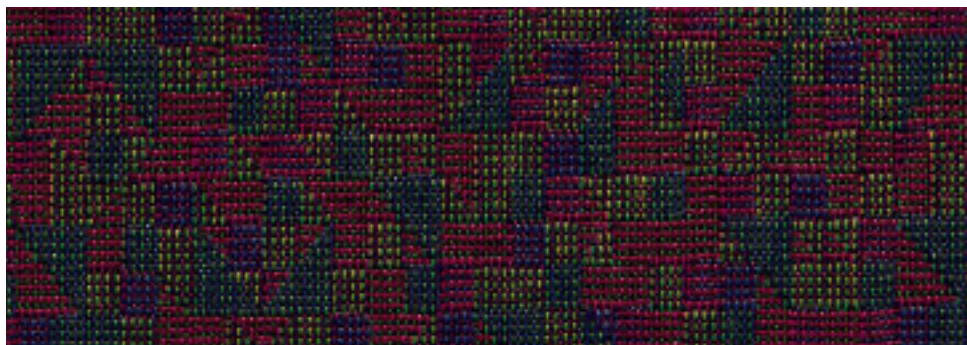


10 Black

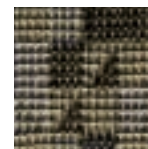
AN Dividend

PRICE CODE III

53% Polyester, 47% Nylon



54 Mardi Gras



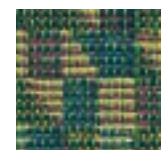
19 Charcoal



69 Sangria



73 Blue Chip

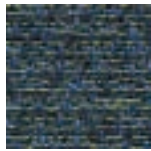


95 Pine

BE Encore

PRICE CODE III

51% Polyester, 49% Acrylic



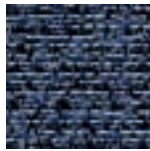
72 Reef



42 Henna



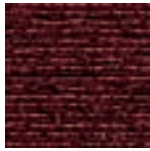
16 Oatmeal



83 Lapis



11 Raven



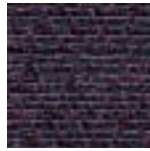
62 Wild Rose



19 Lava



96 Leaf



56 Mulberry

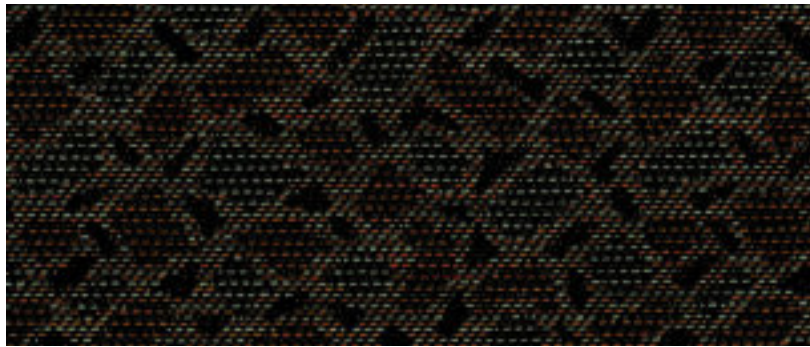


26 Honeysuckle

BP Prisma

PRICE CODE III

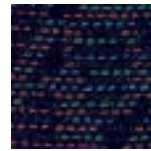
50% Polyester, 50% Acrylic



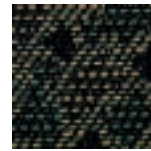
47 Autumn



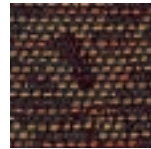
19 Iron



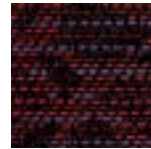
90 Bluestone



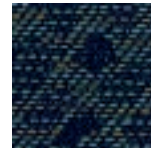
95 Pine



29 Harvest



69 Claret

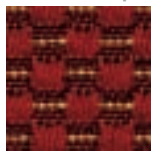


72 Persian

BQ Marquee

PRICE CODE III

52% Polyester, 48% Acrylic



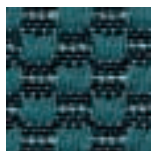
42 Salsa



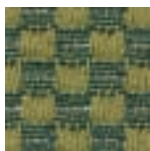
83 Midnight



19 Ebony



72 Ocean



92 Julep



26 Blondie



62 Cranberry

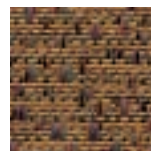
BR Portfolio

PRICE CODE III

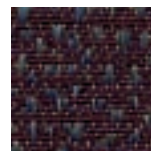
52% Polyester, 48% Acrylic



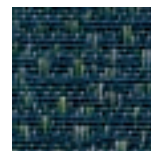
19 Oxford



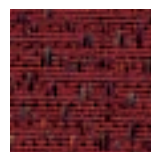
26 Sulfur



56 Currant



85 Bluepoint



69 Punch



72 Sea



90 Ink

BW Curfew

PRICE CODE III

52% Acrylic, 48% Polyester



92 Clover



16 Gravel



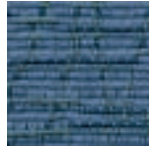
19 Iron



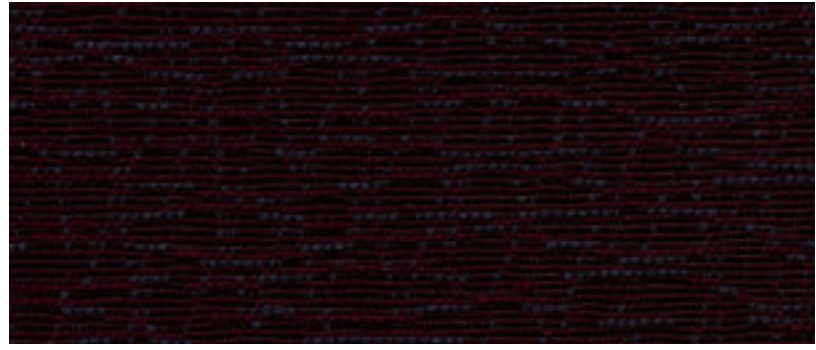
90 Navy



42 Punch



73 Water



69 Claret

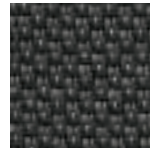
NR Inertia

PRICE CODE III

100% Polyester



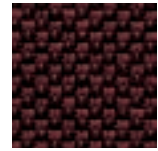
11 Pewter



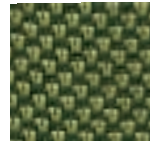
19 Fog



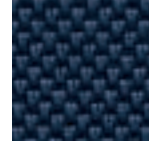
24 Stone



62 Merlot



74 Clover



88 Indigo

NT Tectonic

PRICE CODE III

100% Polyester



10 Black



19 Charcoal



26 Taupe



69 Wine



79 Chive



90 Mariner

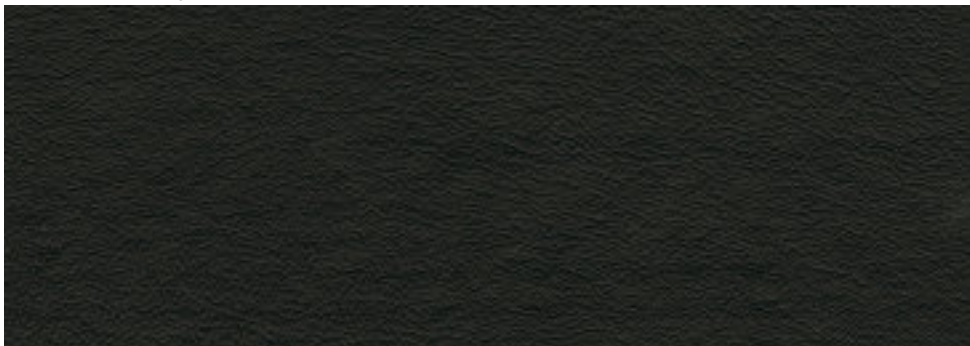


85 Periwinkle

EE Sierra Vinyl

PRICE CODE III

Face: 100% P.V.C.
Back: Polypropylene/Polyester



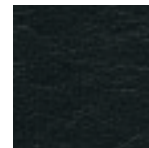
98 Green



90 Navy



65 Burgundy



11 Black

AP Profile

PRICE CODE IV

100% Polyester



26 Topaz



62 Cranberry



98 Forest



56 Grape



10 Jet



19 Charcoal



90 Midnight



72 Ocean



42 Pumpkin

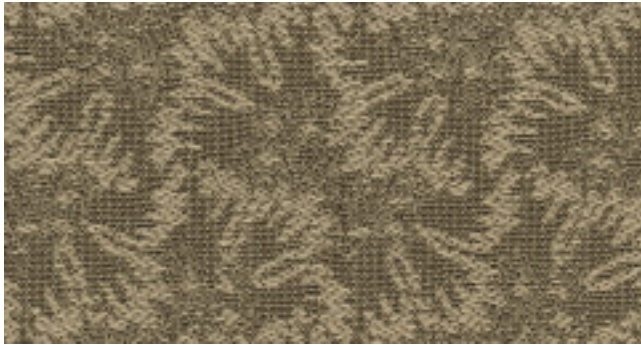


16 Putty

AW Fireworks

PRICE CODE IV

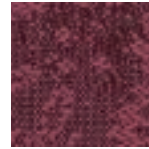
60% Nylon, 40% Polyester



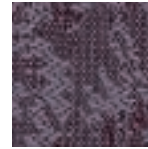
77 Stone



26 Amber



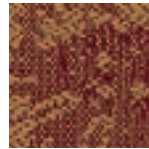
54 Strawberry



56 Heather



72 Seaspray



29 Copper



65 Garnet



90 Midnight

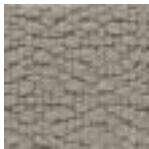


96 Ivy

BB Crepe

PRICE CODE IV

100% Nylon



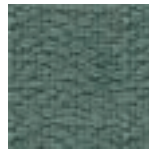
18 Gray



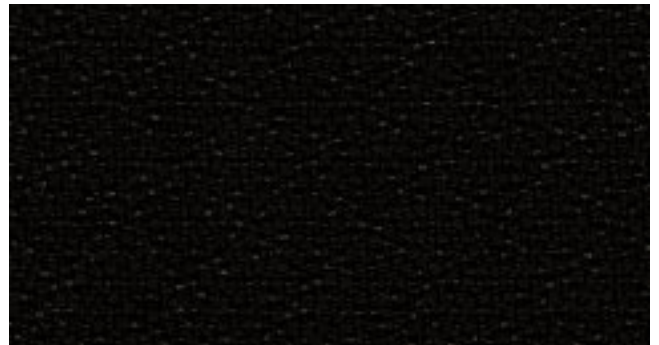
58 Plum



85 Blue



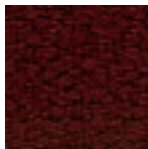
95 Green



11 Black



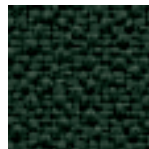
12 Gray



62 Burgundy



90 Blue



98 Green

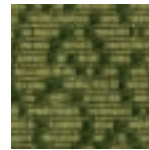
BI Impressions

PRICE CODE IV

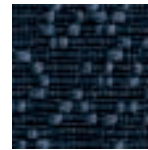
67% Acrylic, 33% Polyester



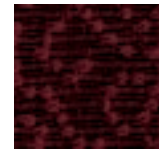
19 Charcoal



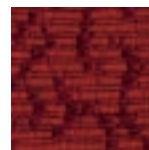
92 Clover



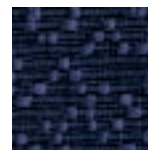
90 Indigo



62 Merlot



42 Paprika



56 Plum



72 Ocean

EC Chamea Faux Leather 

PRICE CODE IV

100% Virgin Vinyl (Poly-Vinyl Chloride)



10 Black



12 Pewter



62 Burgundy



98 Spruce



29 Chaps



38 Baja Brown



90 Navy

EJ Jamestown Vinyl 

(Available on select wood seating only)

PRICE CODE IV

100% Virgin Vinyl



62 Burgundy



83 Blue



90 Blue

DK Kayo

PRICE CODE IV

100% Polyester



19 Pewter



24 Sesame



39 Amber



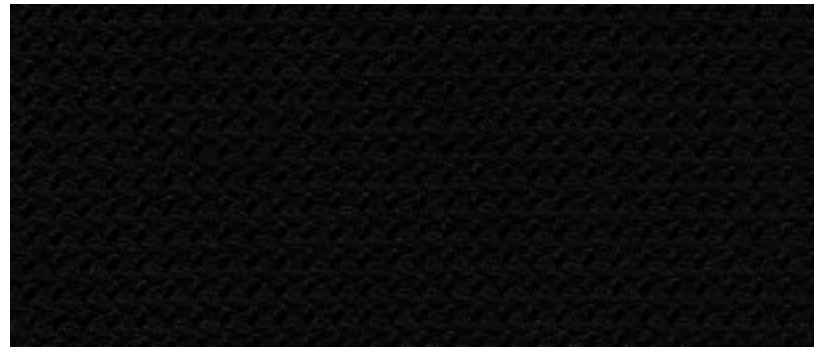
69 Merlot



74 Jade



90 Indigo

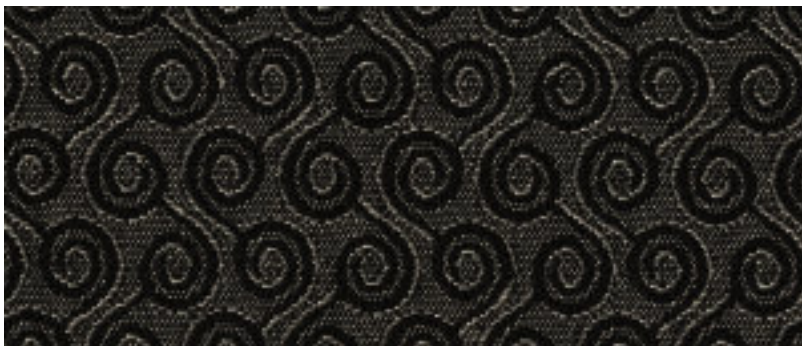


10 Carbon

DP Pivot

PRICE CODE IV

100% Polyester



19 Tower



21 Trail



39 Mesa



62 Garnet



74 Pesto



89 Lagoon

 = Gore Seating Protection  = Vinyl  = Crypton

DC Cachet

PRICE CODE V

100% Polyester



10 Soft Black



19 Mudpack



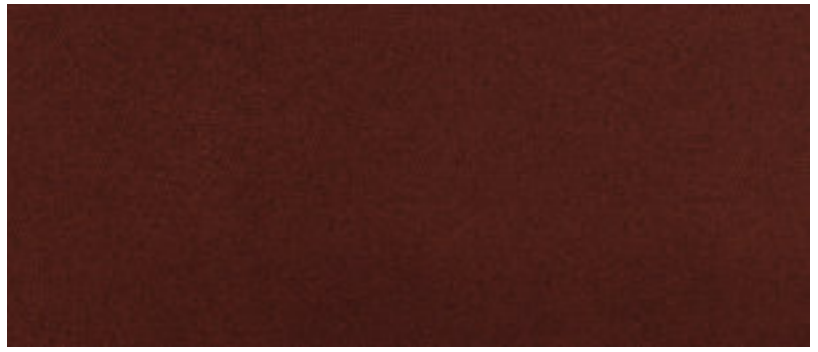
26 Toast



74 Fauna



90 Blue Jean



62 Rubine

chairs

DN Nook

PRICE CODE V

100% Polyester



10 Shadow



19 Flannel



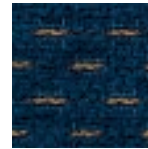
26 Straw



62 Claret



76 Hedge

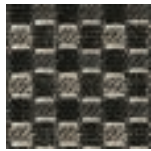


90 Federal

DR Prompt

PRICE CODE V

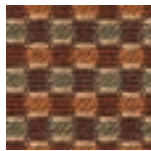
100% Polyester



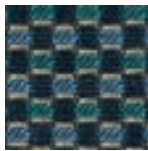
19 Oboe



21 Bronzed



62 Currant



85 Brigade



74 Glen

SR Leather

PRICE CODE L



11 Black

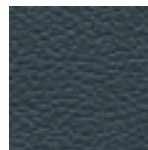


69 Burgundy

SS Leather

PRICE CODE L

100% Genuine Leather



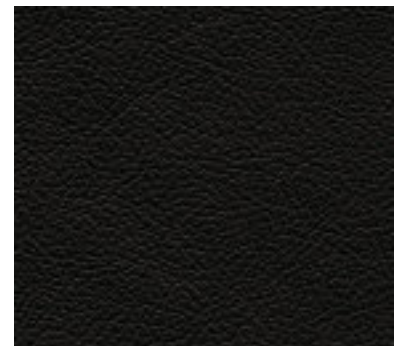
90 Navy



98 Green



65 Burgundy

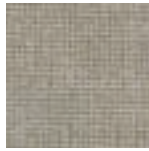


11 Black

EH Shantung 

PRICE CODE M2

Healthcare Vinyl with 100% Polyester Knit Backing



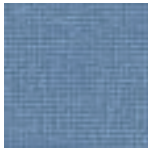
16 Platinum



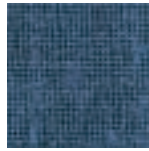
35 Penny



69 Mulberry



92 Bimini



96 Adriatic



19 Metal

EK Kilkenny Tweed 

PRICE CODE M2

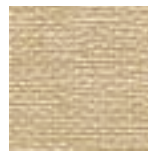
Healthcare Vinyl with 100% Polyester Knit Backing



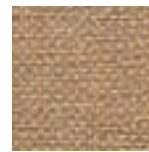
39 Clay Pot



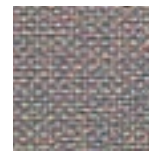
19 Charcoal



26 Stone



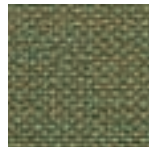
34 Curry



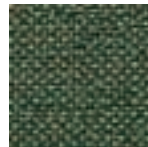
55 Slate



71 Celery



73 Spruce



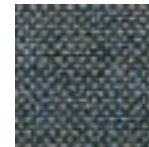
78 Forest



87 Ice



96 Lapis

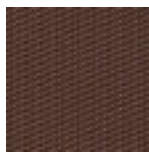


98 Nightshade

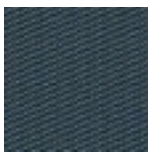
HS Sublime 

PRICE CODE M2

100% Polyvinyl Chloride



56 Amethyst



83 Beryl



92 Peridot



62 Carmine

HT Tatami 

PRICE CODE M2

100% Polyvinyl Chloride



69 Blossom



72 Midori



26 Bamboo

 = Gore Seating Protection  = Vinyl  = Crypton

EG Geomet 

PRICE CODE M2

Healthcare Vinyl with 100% Polyester Knit Backing



26 Shine



39 Mesa



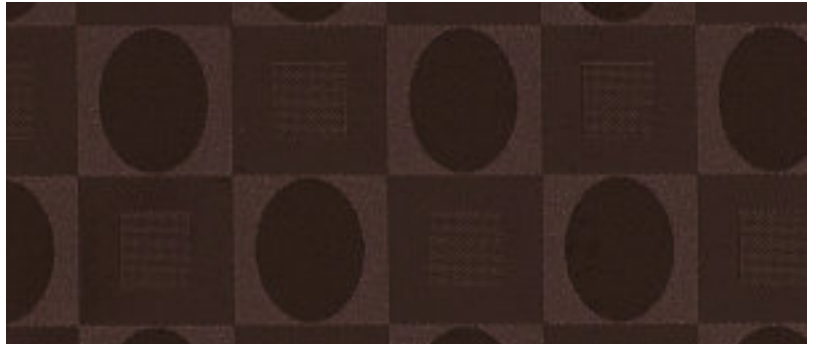
71 Envy



84 Water



92 Fjord



69 Currant

EI Script 

PRICE CODE M3

Healthcare Vinyl with 100% Polyester Knit Backing



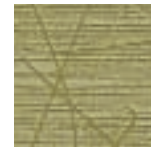
96 Cobalt



26 Linen



39 Canyon



71 Palm



81 Spearmint

ET Matrix 

PRICE CODE M3

Advanced Hybrid Healthcare Vinyl Matrix with Polyester Knit Backing



39 Mango



52 Daybreak



58 Mystic



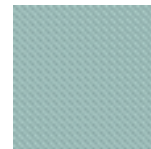
69 Pinot



72 Sorbet



78 Willow



81 Mirage

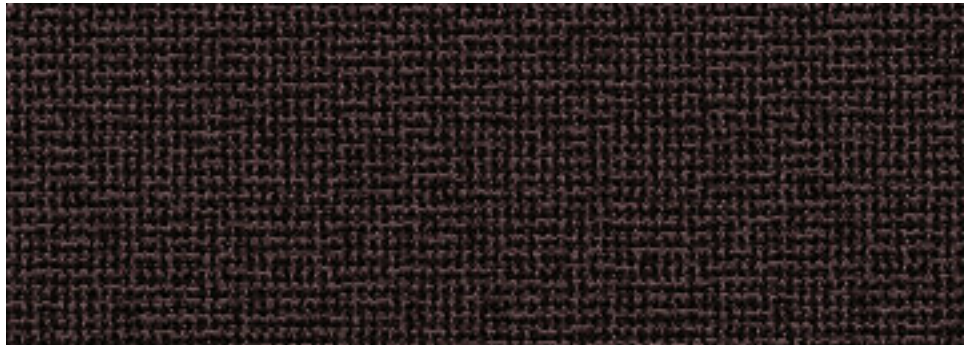


84 Alpine

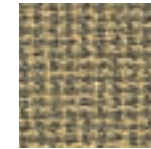
HR Tribute 

PRICE CODE M3

100% Polyester, Woven Crypton®



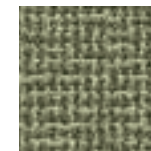
56 Iris



83 Cream



90 Night



96 Melon

 = Gore Seating Protection  = Vinyl  = Crypton

Note: Patterns marked with the symbols above meet AATCC-147-2004 and are suitable for healthcare environments.

ED Dodgeball* 

PRICE CODE M4

Healthcare Vinyl with 100% Polyester Knit Backing



24 Rocket



64 Ricochet



84 Carom

*NOTE: To better show overall pattern, fabrics have been reduced 55%

EP Petals* 

PRICE CODE M4

Healthcare Vinyl with 100% Polyester Knit Backing



54 Celebration



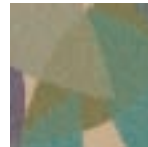
24 Simpatico



64 Radiance



74 Springtime



84 Harmony



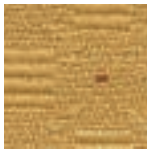
94 Tranquility

*NOTE: To better show overall pattern, fabrics have been reduced 40%

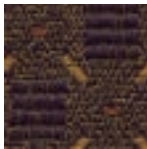
HJ Jinx + Gore 

PRICE CODE M4

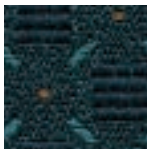
60% Polyester, 40% Olefin with GORE™ Seating Protection



26 Candlelight



56 Violet



72 Dusk



70 Willow

HU Hue + Gore 

PRICE CODE M4

100% Recycled Polyester with GORE™ Seating Protection



26 Frothe



90 Indigo



69 Currant



19 Char

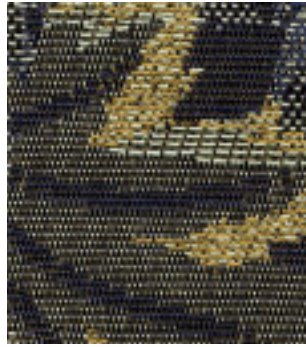
 = Gore Seating Protection  = Vinyl  = Crypton

HF Frolic* **C** PRICE CODE M5

60% Rayon, 40% Polyester, Crypton®



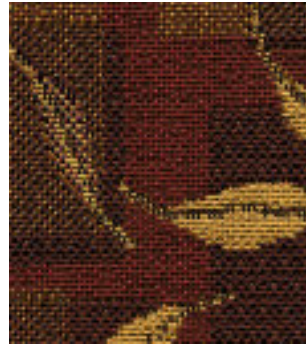
42 Kiss



83 Creek

HP Parker + Gore* **G** PRICE CODE M5

53% Rayon, 47% Polyester with GORE™ Seating Protection



42 Red Pepper



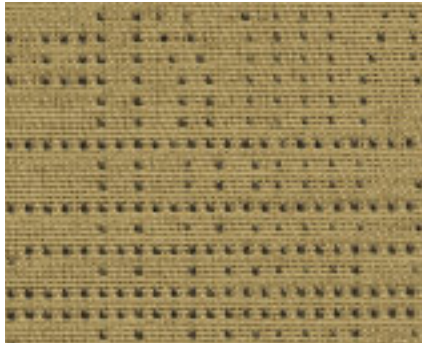
70 Leek

*Note: To better show overall pattern, fabrics have been reduced 25%.

HN Infusion* **C**

PRICE CODE M5

56% Rayon, 44% Polyester, Woven Crypton®



26 Sisal



56 Sultan



83 Azure

FG Segment

PRICE CODE FC2

66% Avora FR Polyester, 18% Polyester, 16% FR Olefin



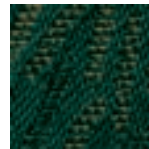
39 Autumn



26 Camel



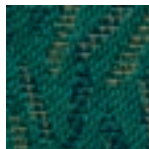
62 Crimson



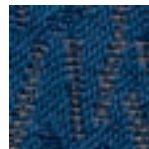
78 Hunter



19 Mercury



85 Ocean



90 Royal



10 Char

FP Crepe

PRICE CODE FC2

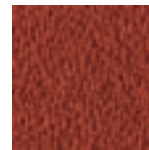
50% FR Polyester, 50% Polyester



26 Buckskin



10 Black



39 Copper



62 Crimson



78 Ivy



19 Mercury



85 Ocean



90 Royal

G = Gore Seating Protection **V** = Vinyl **C** = Crypton

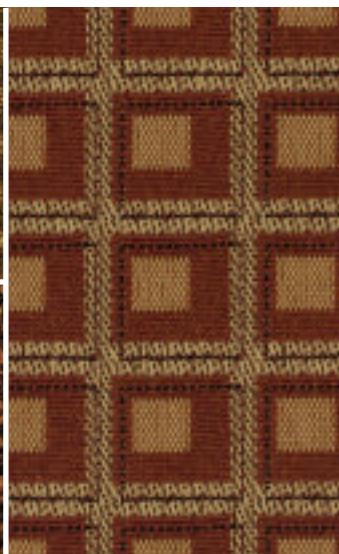
Note: Patterns marked with the symbols above meet AATCC-147-2004 and are suitable for healthcare environments.

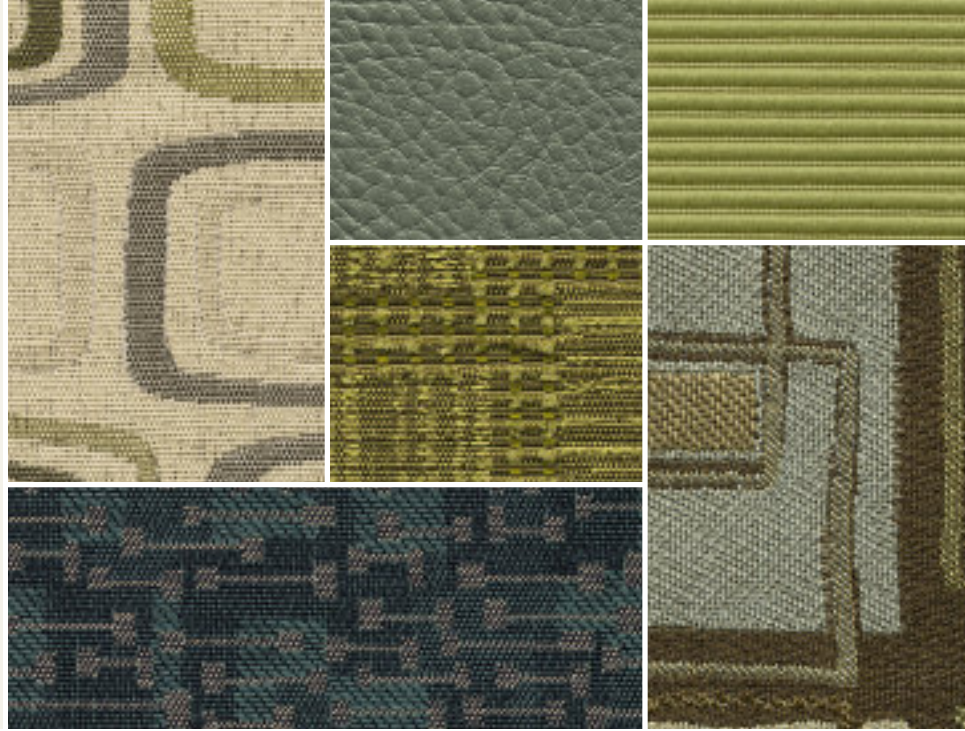


Simple Textiles™

HUNDREDS OF SIMPLE CHOICES.

- More than 80 exciting patterns and 800+ colorways for chairs and panels
- Available in HON standard lead-times (*Exceptions may occur if more than 25 yards are required*)
- HON Limited Lifetime Warranty
- Solutions for commercial, government, education and healthcare environments





Visit your on-line resource for
this program at www.simpletextiles.com
or call 800-833-3964



Wood seating finishes



D Natural Maple



N Mahogany



J Henna Cherry



H Bourbon Cherry



M Medium Oak

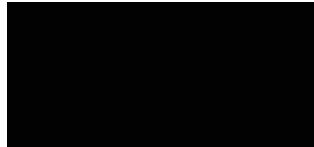


W Walnut

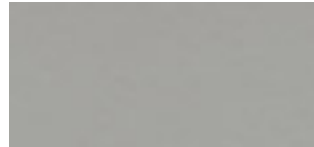
Monochromatic seating frame colors



E Taupe



T Black



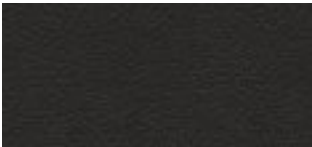
C Titanium



Y Chrome

HON monochromatic seating colors match corresponding laminates and HON paint colors for countless decorating options. All paints are commercial quality and are color-matched for consistent color and gloss.

Student shell chairs shell colors



11 Lava



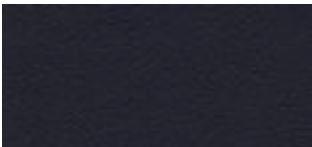
40 Red



65 Garnet



83 Blue Violet



91 Navy



98 Green

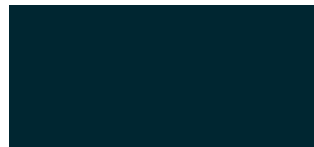
Teacher/Student chairs and stackaways shell colors



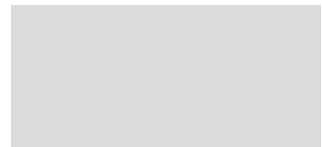
BK Black



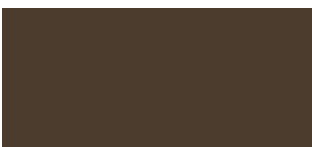
BL Blue



TE Teal



GR Gray



BR Brown



BU Burgundy

Olson Series shell colors



29 Taupe



16 Silver Grey



11 Lava



40 Red



83 Blue Violet



91 Navy



65 Garnet



41 Cherry

chairs

Gueststackers shell colors



10 Black



12 Charcoal



90 Blue



62 Burgundy

5060 Park Avenue seating finishes (base/arm colors)



H Bourbon Cherry



J Henna Cherry



N Mahogany



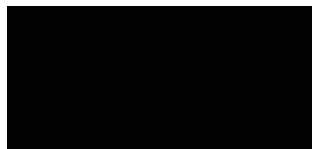
D Natural Maple



K6 Satin Nickel



A6 Brushed Brass



T Black

Base – \$50 list upcharge for all colors except Black
Arms – \$30 list upcharge for all colors except Black