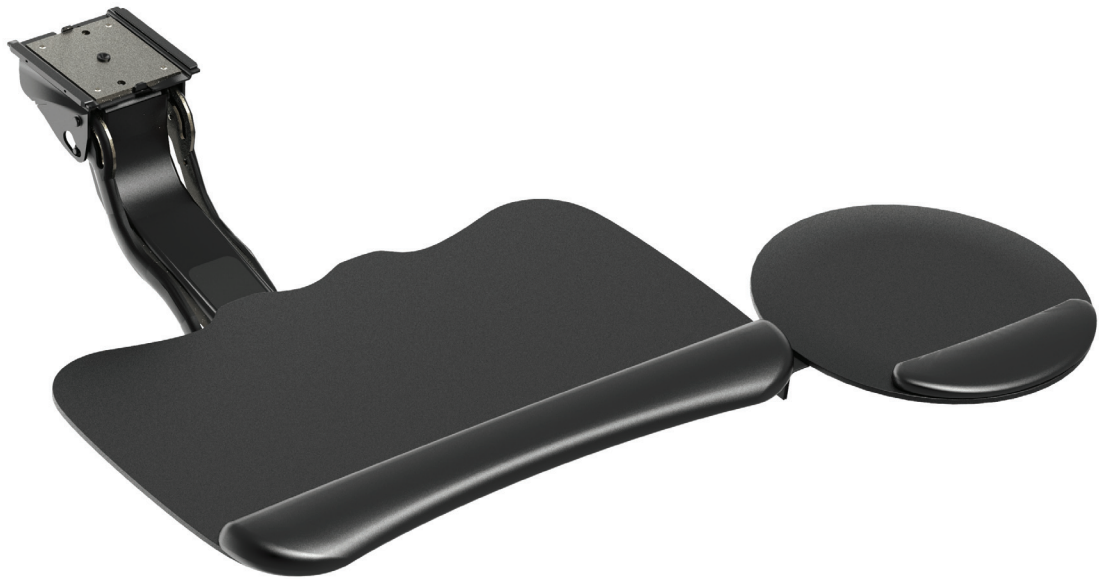


HON

Accessories
Keyboard Trays



COMFORT AND CONVENIENCE AT YOUR FINGERTIPS

Ergonomic design meets customized comfort in the HON Keyboard Platforms. Each keyboard tray accommodates both left and right hand mousing without tools, and the tilt can be easily adjusted. The low-profile design includes a spring-assisted, counter-balanced mechanism for smooth operation. It also moves freely from side to side to accommodate virtually any type of user or work style. When not in use, the entire tray retracts under the worksurface and cords management clips help create a clean, uncluttered work area. Backed by the HON Full Lifetime Warranty, these keyboard trays will provide years of reliable service.



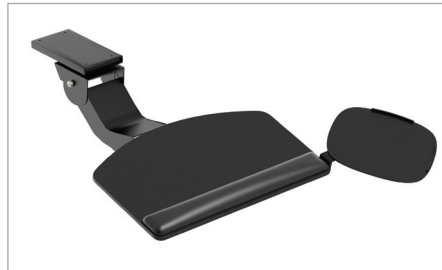
FEATURES THAT ADAPT TO YOU

- The mouse tray features three forward index positions and includes a built-in cable manager and fence.
- Anti-skid grip strips prevent keyboard slippage a snap-in foam-gel wrist rest offers ergonomic cushioning.
- The sliding mouse deck easily adjusts for left and right hand use, and accommodates wave-style keyboards.



H2516

- 30-degree tilt (10-degrees toward and 20-degrees away) allow for placement in a variety of positions.
- 23" Glide track
- 7" Height adjustment above and 5.5" below track



H2107

- 30-degree tilt (15-degrees toward and 15-degrees away) allow for placement in a variety of positions.
- 21" Glide track
- 2.5" Height adjustment above and 4.5" below track



H1706

- 25-degree tilt (10-degrees toward and 15-degrees away) rotation allow for placement in a variety of positions.
- 17" glide track
- 1.25" height adjustment above and 5" below track

HON®

The HON Company
200 Oak Street
Muscatine, IA 52761
800.833.3964
hon.com

© 2012 The HON Company. Form No. H4222 (11/12)
HON is a registered trademarks of HNI Technologies, under license to The HON Company.