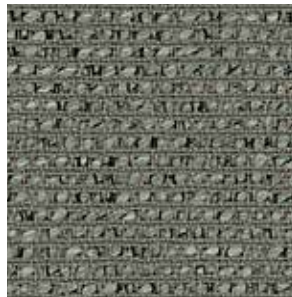


ISN003 Silver



ISN041 Limestone



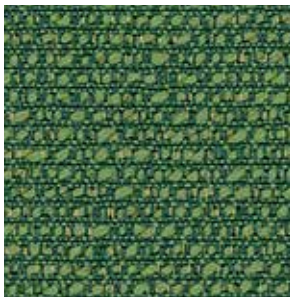
ISN002 Lead



ISN004 Fire



ISN011 Tundra



ISN008 Jungle



ISN005 Ocean



ISN007 Blue Jay



ISN020 Smoke




ISN006 Lake



ISN001 Black

# In Season

<b>Application</b>	Chair
<b>Content</b>	50% Pre-Consumer Recycled Solution-Dyed Nylon, 50% Solution-Dyed Nylon
<b>Width</b>	54"
<b>Weight</b>	16.7 ounces per linear yard
<b>Finish</b>	Stain Resistant
<b>Backing</b>	Acrylic
<b>Abrasion</b>	140,000 double rubs (W)
<b>Flame Resistance</b>	NFPA 260 (UFAC Class 1), California TB 117-2013, Section 1 compliant.
<b>Maintenance</b>	WS: Clean with upholstery shampoo or mild dry cleaning solvent
<b>Sustainability</b>	Recycled Content
<b>Manufacturer</b>	HON

**ACT Registered Certification** 

Multiple factors affect fabric durability and appearance retention, including end-user application and proper maintenance. Wyzenbeek results above 100,000 double rubs have not been shown to be a reliable indicator of increased fabric lifespan.